

## MicroPellet

### PROCEDURE

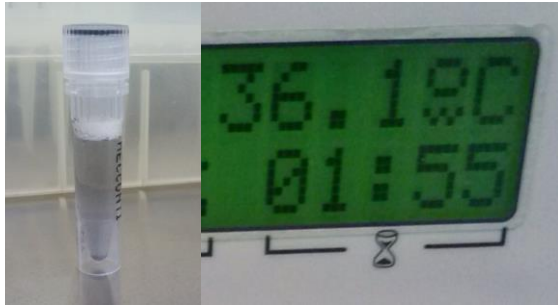
1. Remove only the amount of vials needed for testing.
2. Allow the pellet to equilibrate to room temperature prior to use. Warm the Rehydration Fluid to 34°C to 38°C prior to use.



3. Remove the cap from the vial containing the Rehydration Fluid. Remove the cap from the vial containing the pellet and aseptically transfer the pellet to the vial of Rehydration Fluid.



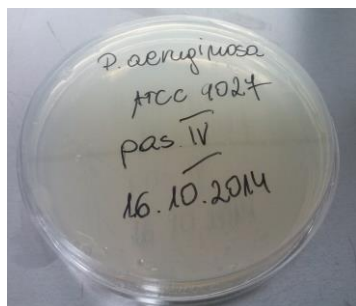
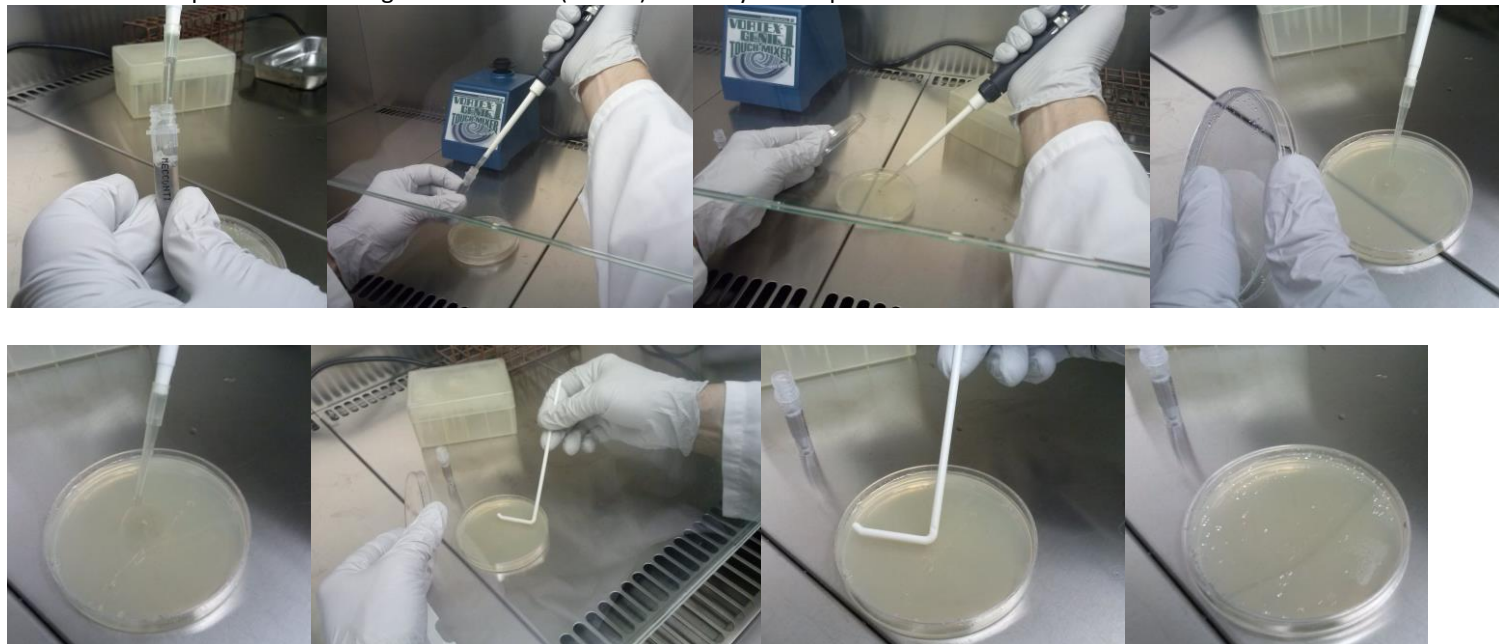
4. Incubate the rehydrated pellet at 34°C to 38°C for 30 minutes.



5. After incubation, vortex mix the rehydrated pellet to achieve equal distribution of the cells.



6. Inoculate samples to be challenged with 0.1 mL (100  $\mu$ L) of the hydrated pellet.



\*The Rehydrated Sample should be used within 8 hours after rehydration. The rehydrated sample should be refrigerated between use to avoid a change in the concentration. The exception to the 8 hour stability is *B. fragilis* and *C. perfringens* which must be used within 30 minutes.

#### **LIMITATIONS**

CFU's are specified under defined procedures and growing conditions and cannot be guaranteed under other conditions. Growth results may vary when utilizing more inhibitory or selective media over nonselective media.