



Color samples of Easy Plate EC Escherichia coli and *E. coli* **kikkoman**

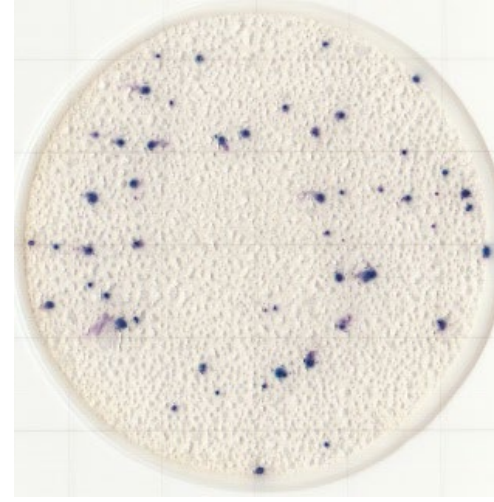
Escherichia coli
(NBRC 102203)



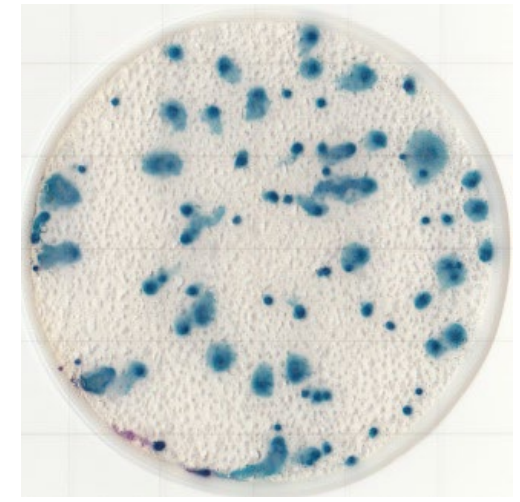
Escherichia coli
(NBRC 3806)



Escherichia coli
(NBRC 3543)



Escherichia coli
(D0099)



Klebsiella pneumoniae
(ATCC 13883)



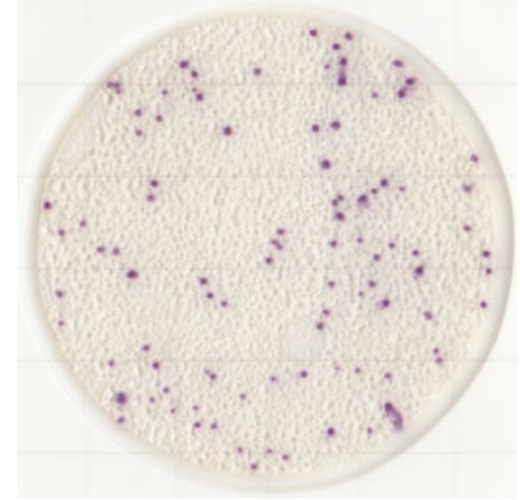
Enterobacter cloacae
(ATCC 222)



Escherichia hermanii
(NBRC 105704)



Citrobacter freundii
(ATCC 8090)



Color samples of Easy Plate EC coliforms

Examples of chicken

