

# Dry Media

GAM Broth

GAM Agar

GAM Agar  
(Modified)

GAM Broth  
(Modified)

TGC Broth  
(without indicator)

Lactobacilli  
Inoculum Agar



## HyServe

HyServe GmbH  
Ammerthalstraße 7  
Tel. +49 (0) 89 3703 1223  
[info@hyserve.com](mailto:info@hyserve.com)

D- 85551  
Kirchheim/München  
Fax +49 (0) 89 3703 1225  
[www.hyserve.com](http://www.hyserve.com)



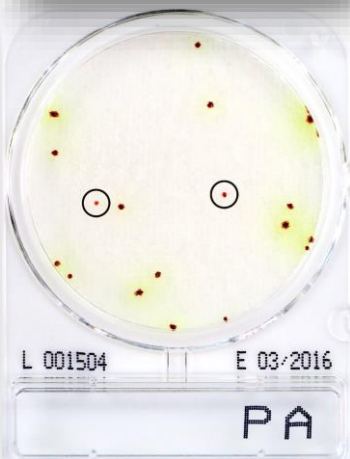
22 ± 2 horas a 36 ± 1 °C  
(NordVal, MicroVal)  
22 ± 2 horas a 37 ± 1 °C (AOACI)

**Enterococcus** Colonias azules/azul verdosas

20 - 24 horas a 35 - 37 °C

**V. Parahaemolyticus** Colonias azules-verde

**Vibrio spp.** Colonias incoloras.



48 ± 3 horas a 36 ± 1 °C

**Pseudomonas aeruginosa** Colonias rojas con halos de color amarillo verdoso

44 ± 4 horas a 36 ± 2 °C,  
68 ± 4 horas a 22 ± 2 °C (ISO 6222:1999)

Agua potable y agua ultrapura

**Bacterias acuáticas heterótrofas** Colonias rojas;

**Levaduras** Colonias blanco-rosadas;

**Hongos** Estructura tridimensional y esponjosa.



24 ± 2 horas + otras 24 ± 2 horas a 37 ± 1 °C

**Listeria monocytogenes** Colonias rojas con o sin bordes azules

24 ± 2 horas + otras 24 ± 2 horas a 35 o 37 ± 2 °C

**Listeria spp.** Colonias azules

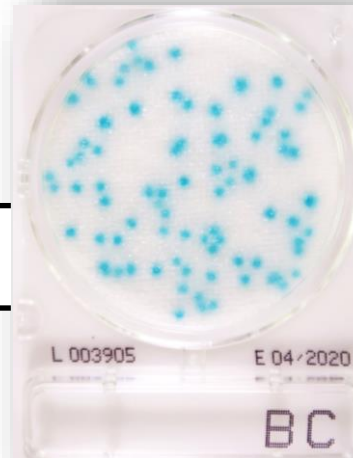


20 - 24 horas a 41 - 43 °C

**Salmonella spp.** colonias verdes o negras con halos amarillos

24 ± 2 horas a 30 ± 1 °C

**Bacillus cereus** Colonias azules / celestes



Also BUY CompactDry YMR (Yeasts & Molds Rapid), CompactDry YM (Yeasts & Molds), CompactDry ETB (Enterobacteria), Compact Dry CC (Coliforms) CompactDry EC (E. coli and Coliforms), CompactDry XSA (S. aureus), CompactDry TC (Total Count),