

"Simplify your laboratory
workflow"

kikkoman
Kikkoman Biochemifa Company

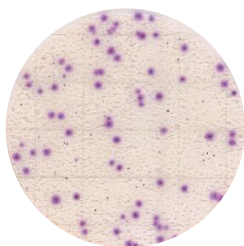
Prepared media plate

Easy PlateTM YM-R

-Rapid type for Yeast and Mold

Salami

— Easy Plate YM-R



48 hours incubation

— PDA Medium



120 hours incubation

*Data is provided by Center for Fungal Consultation, incorporated nonprofit organization

Colonies are clearly colored in 48 hours.

Shorter incubation time than agar media!

Colonies develop a purple color, making it easy to identify and count colonies even in the presence of food residues.



• Interpretation

Colored as purple colonies

If you want to distinguish between yeast and mold, please refer to the following.

Yeast: Colonies are small circle and have defined edges.

Mold: Colonies are large and have diffuse edges.

Product Code: 61977

Incubation temperature: 25°C±1

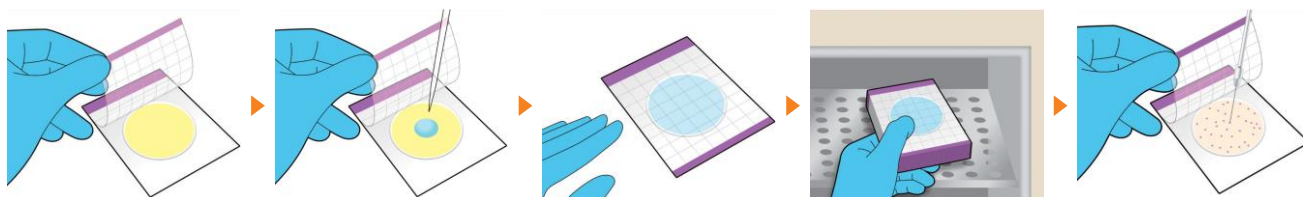
Incubation time: 48±2 hours

*If coloration is unclear, perform an additional 24-hours incubation

Storage condition (Unopened) 2-8°C

Shelf life: 18 months after manufacturing date

how to use

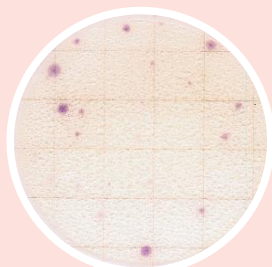


Example colonies of 48 hours incubation

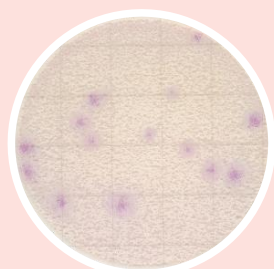
Foods



Dressing
+*Wickerhamomyces anomalus*



Pancake mix

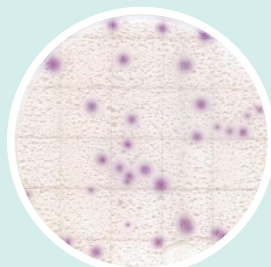


Egg powder
+*Aspergillus niger*

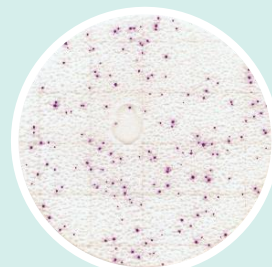


Sweet

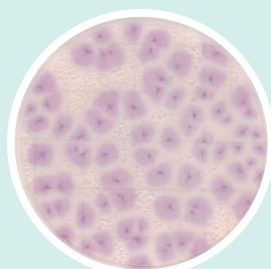
Strains



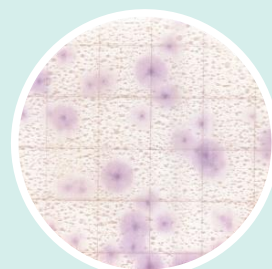
Aureobasidium pullulans



Zygosaccharomyces rouxii



Geotrichum candidum

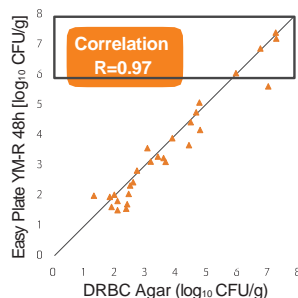
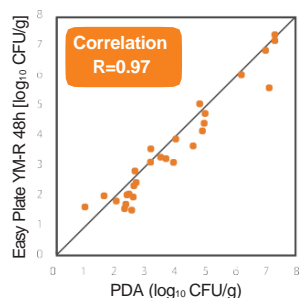


Aspergillus flavus

*Data is provided by Center for Fungal Consultation, incorporated nonprofit organization

•Excellent media performance

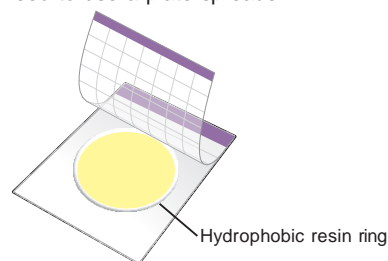
High correlation with agar media has been confirmed for a wide variety of foods



*Data is provided by Center for Fungal Consultation, incorporated nonprofit organization

•Easier-to use

Simply close the cover film and the sample suspension spreads evenly across the plate surface
-without the need to use a plate spreader.



The plate surface is also surrounded by a unique hydrophobic resin ring to control the sample suspension and prevent leaks.

Easy Plate Series

Easy Plate AC - Aerobic Bacteria
Easy Plate CC - Coliform
Easy Plate EC - *E. coli*/ Coliform
Easy Plate SA - *S. aureus*

Kikkoman Biochemifa Company

2-1-1 Nishi-shinbashi, Minato-ku, Tokyo 105-0003 JAPAN
biochemifa@mail.kikkoman.co.jp
<https://biochemifa.kikkoman.com/e/>

For more
information



HyServe

HyServe GmbH D- 85551
Ammerthalstraße 7 Kirchheim/München
Tel. +49 (0) 89 3703 1223 Fax +49 (0) 89 3703 1225
info@hyserve.com www.hyserve.com