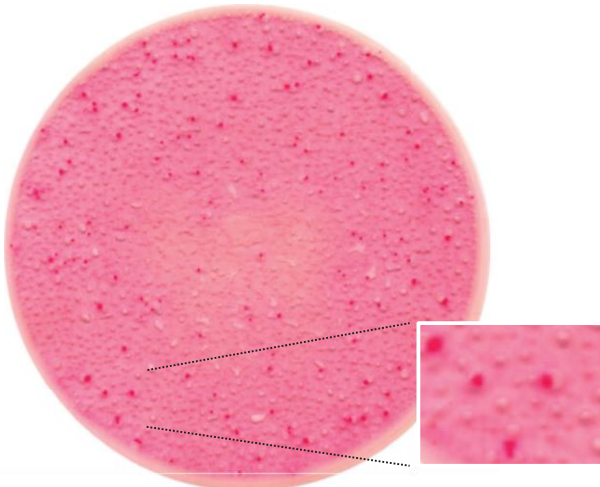


Easy Plate™ EB

Prepared media plate for testing
Enterobacteriaceae

Easy Plate EB for *Enterobacteriaceae* is a ready-made dry medium that contains modified Violet Red Bile Glucose (VRBG) media, and a cold-water-soluble gelling agent that facilitates colony enumeration. Checking for contamination of *Enterobacteriaceae* is useful in the food and beverage industries. High levels are indicators for insufficient hygiene. *Enterobacteriaceae* ferments glucose and produce acid. The gelled medium contains the pH indicator Neutral Red (red colonies) and crystal violet that causes EB colonies to red producing a presumptive result.



Salmonella enterica subsp. *enterica* (NBRC 13245)

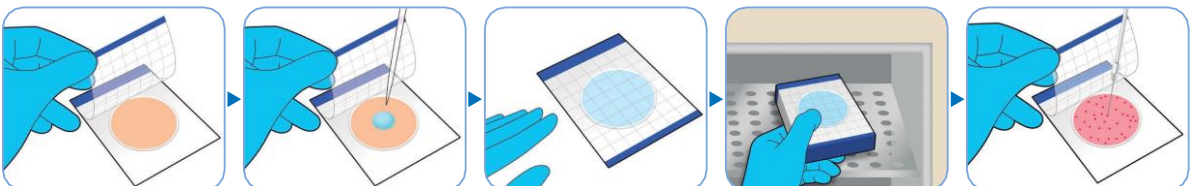
Interpretation

Count all red colonies regardless of size or intensity.

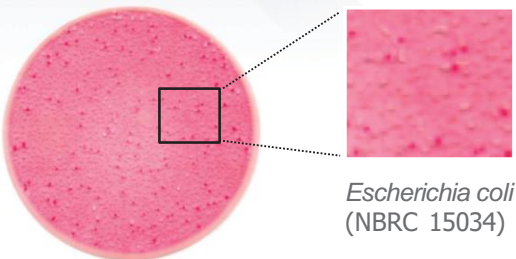
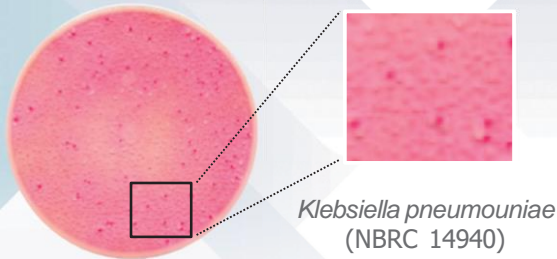
**Does not need to count bubble patterns associated with gas producing colonies.*

Product Code	61978
Incubation temperature	35 ± 1°C or 37 ± 1°C
Incubation time	24 ± 1 hours
Storage condition	(Unopened) 2 - 8°C
Shelf life	12 months after manufacturing date

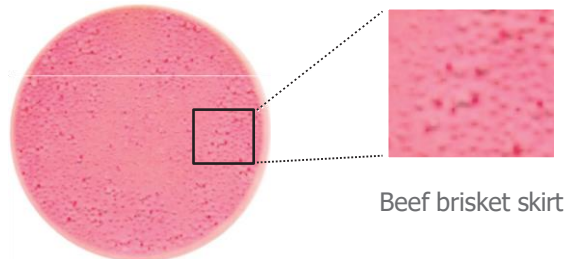
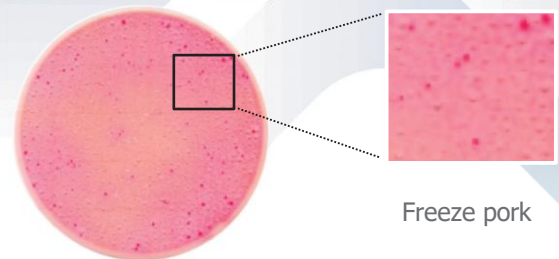
How to use



Strains

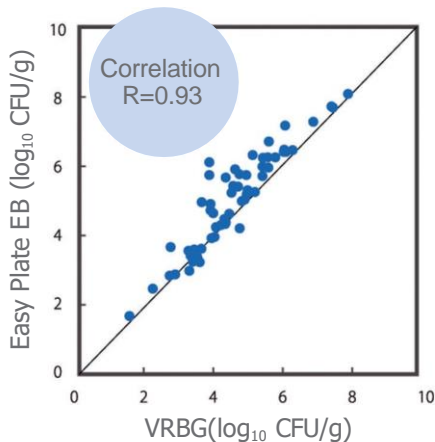


Foods



• Excellent media performance

High correlation with VRBG agar has been confirmed for a wide variety of foods.



• Colony Counting System for Easy Plate

Simpler, time-saving way to count colonies and eliminates the effects of variation and skill level among operators.



*Requires use of the scanner ADS-4300N by BROTHER INDUSTRIES, LTD. for imaging Easy Plate. Scanner sold separately.

Easy Plate Series

- 1 Easy Plate AC - Aerobic Bacteria
- 2 Easy Plate EC - Coliform
- 3 Easy Plate CC - *E. Coli* / Coliform
- 4 Easy Plate SA - *S. aureus*
- 5 Easy Plate YM-R - Rapid type Yeast and Mold
- 6 Easy Plate EB - *Enterobacteriaceae*



kikkoman

Kikkoman Biochemifa Company

2-1-1 Nishi-Shinbashi, Minato-ku, Tokyo 105-0003, Japan

E-mail: biochemifa@mail.kikkoman.co.jp

URL: <https://biochemifa.kikkoman.com/e/>

□The information contained in this catalog may change without notice.

©2024 Kikkoman Corp. (6012W240301)

HyServe

HyServe GmbH
Ammerthalstraße 7
Tel. +49 (0) 89 3703 1223
info@hyserve.com

D- 85551
Kirchheim/München
Fax +49 (0) 89 3703 1225
www.hyserve.com