

Easy Plate™ AC-R

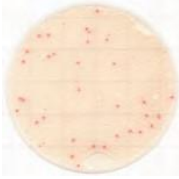
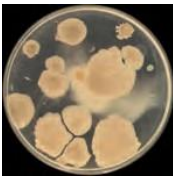




Prepared Media Plate Rapid Type for Aerobic Bacteria

Easy Plate™ AC-R is a custom media formulation for cultivation of aerobic bacteria. A prepared plate that contains a chemical indicator that provides easily distinguishable red-colored colonies, allowing you to easily identify and count aerobic bacteria in 24±1 hours.

Comparison of Performance

Easy Plate™ AC-R vs Plate Count Agar

Easy Plate™ AC-R 24 hour incubation	Plate count agar 48 hour incubation
<p>Easily distinguishable brightly colored colonies</p> 	
Example: Flour	
<p>Reduces the spreading of colonies of <i>Bacillus</i> spp.</p> 	
Example: Foods including <i>Bacillus</i> spp.	

Interpretation

Count all red colonies regardless of size or intensity.
The appropriate number of colonies is between 1 and 250.

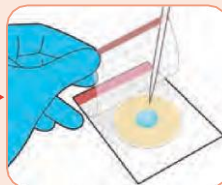
Product Code	61979
Incubation temperature	35±1°C
Incubation time	24±1 hours*
Storage condition	2–8°C
Shelf life	12 months

**If colony growth is insufficient, perform an additional 24-hours incubation.*

How to use



Lift the cover and place 1 mL sample suspension onto the center of the plate.



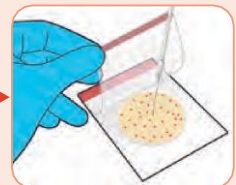
Lower the cover onto the sheet and allow the sample to spread evenly.



Allow the plate to settle for 3 min or more on a horizontal surface for solidification.



Incubate the plate(s) at 35 ± 1°C for 24 ± 1 hours. Up to 25 plates can be stacked for space saving and convenience.



Colony Isolation: Lift the cover and pick a single colony from the gel.

Example colonies at **24-hour** incubation

Foods



Sprouts



Milkshake



Cinnamon



Stuffed peppers

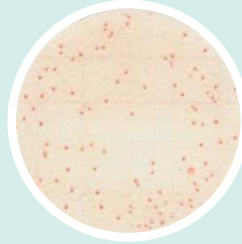
Strains



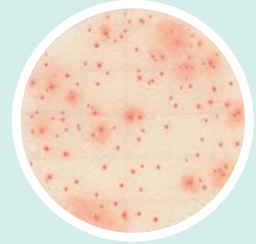
Escherichia coli
(NBRC 15034)



Bacillus subtilis
(NBRC 3134)



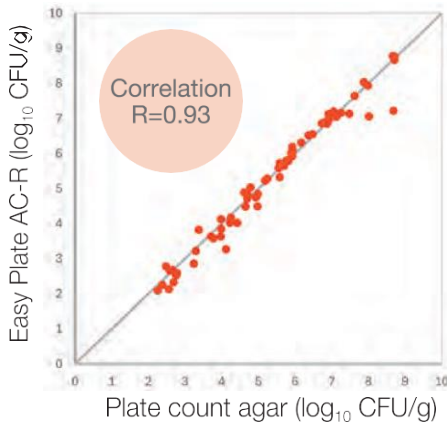
Klebsiella pneumoniae
(NBRC 14940)



Proteus mirabilis
(NBRC 105697)

• Excellent media performance

High correlation with the plate count agar in various foods.



• Colony Counting System for Easy Plate

Simpler, time-saving way to count colonies and eliminates the effects of variation and skill level among operators.



Learn more about
Colony Counting System for Easy Plate !!



*Requires use of the scanner ADS-4300N by BROTHER INDUSTRIES, LTD. for imaging Easy Plate. Scanner sold separately.

Easy Plate™ Series

AOAC PTM Certified

MicroVal Certified

NordVal Certified

*AOAC PTM, MicroVal and NordVal certification for Easy Plate EB and Easy Plate AC-R is pending.

- 1 Easy Plate™ AC - Aerobic Bacteria
- 2 Easy Plate™ CC - Coliform
- 3 Easy Plate™ EC - *E. Coli* / Coliform
- 4 Easy Plate™ SA - *S. aureus*

- 5 Easy Plate™ YM-R- Rapid type Yeast and Mold
- 6 Easy Plate™ EB - *Enterobacteriaceae*
- 7 Easy Plate™ AC-R- Rapid type Aerobic Bacteria

kikkoman

Kikkoman Biochemifa Company

2-1-1 Nishi-Shinbashi, Minato-ku, Tokyo 105-0003, Japan

E-mail: biochemifa@mail.kikkoman.co.jp

URL: <https://biochemifa.kikkoman.com/e/>

*The information contained in this catalog may change without notice.

©2025 Kikkoman Corp. (6012Y250101)

HyServe

HyServe GmbH
Ammerthalstraße 7
Tel. +49 (0) 89 3703 1223
info@hyserve.com

D- 85551
Kirchheim/München
Fax +49 (0) 89 3703 1225
www.hyserve.com