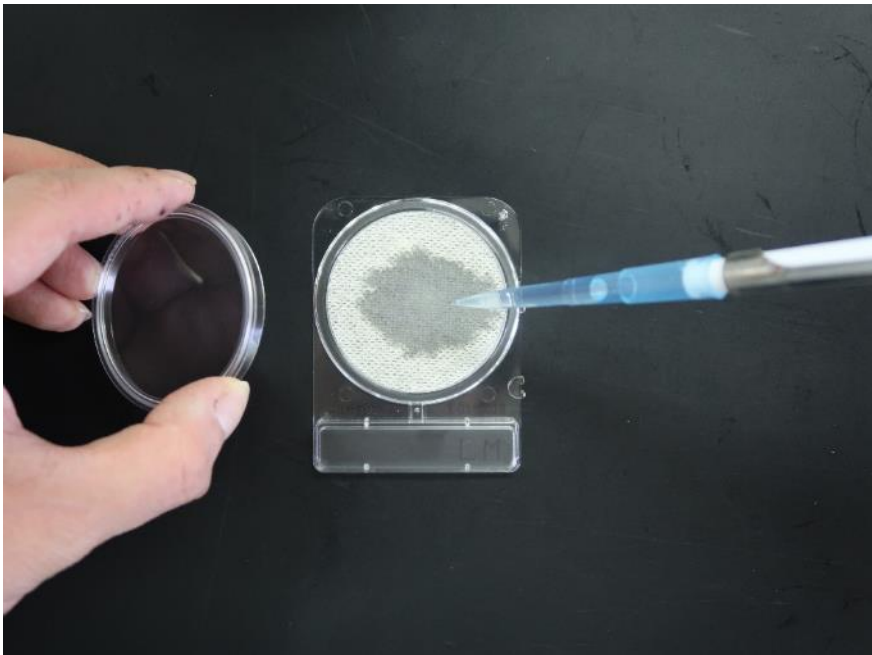


**CompactDry LM method
for enumeration and detection
of *Listeria monocytogenes***

CompactDry LM



Compact Dry LM is a ready-to-use, chromogenic plate for enumeration and detection of *Listeria monocytogenes*.

Procedure of CompactDry LM method for **enumeration** of *Listeria monocytogenes*

1. Preparation of sample

Dilute X g or X mL of sample in 9 x X ml Buffered peptone water(BPW).



2. Isolation

Inoculation 1mL of suspension (to be diluted if necessary) to CompactDry LM



3. Reading

page 4

↓ (only if red colonies are observed)

4. Confirmation

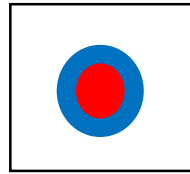
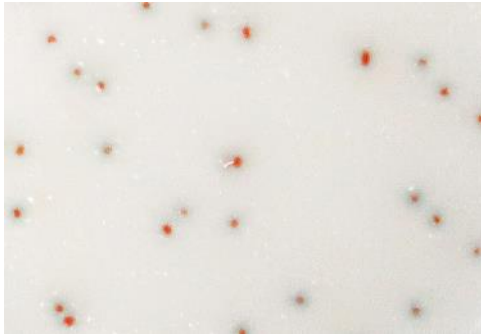
page 5-6

Reading

enumeration

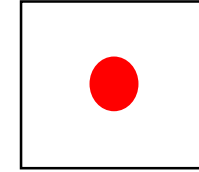
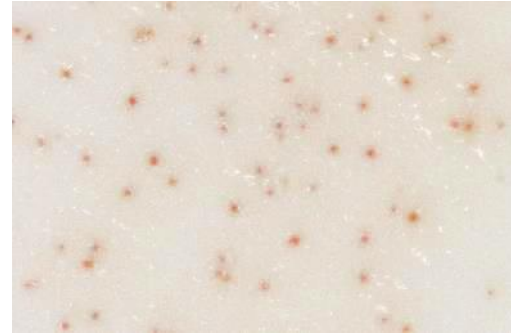
detection

HyServe



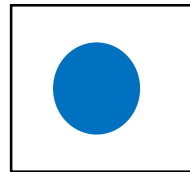
Red colony surrounded
by blue color

→ *L. monocytogenes*
(*L. monocytogenes* +)



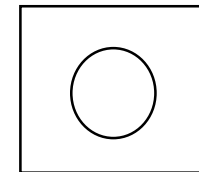
Red colony

→ *L. monocytogenes* or *L. ivanovii*
(Confirmation is needed)



Blue colony

→ other *Listeria* spp.
(*L. monocytogenes* -)



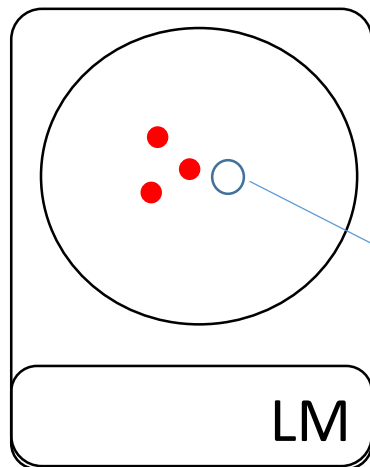
White or yellow colony

→ Microorganism except *Listeria* spp.
(*L. monocytogenes* -)

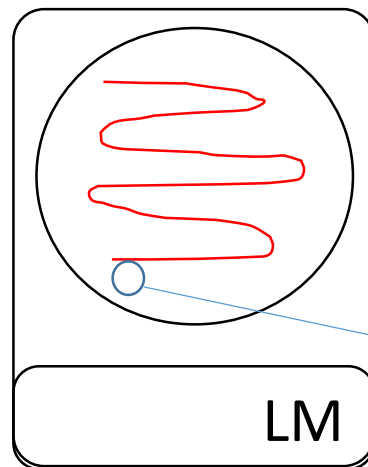
Confirmation

(*only if red colonies are observed)

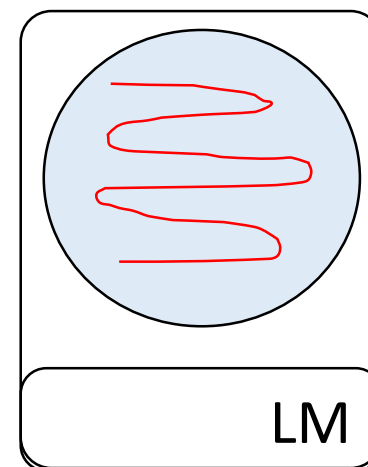
1. Pick up a red colony on the incubated CompactDry LM plate by a loop.
2. Streak it on the surface of another CompactDry LM plate.
3. Drop 1 mL of sterilized water(or saline, buffer) on the CompactDry LM.
4. Incubate at 37°C for 24h and 48h.



1.



2.



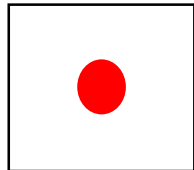
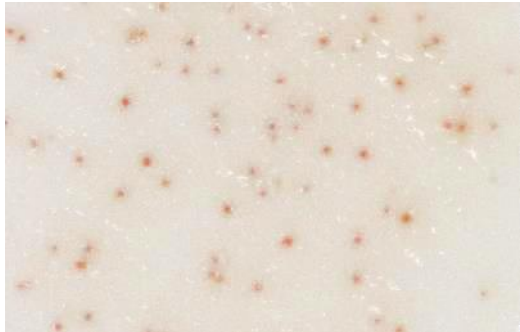
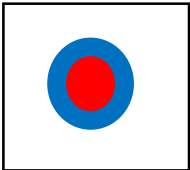
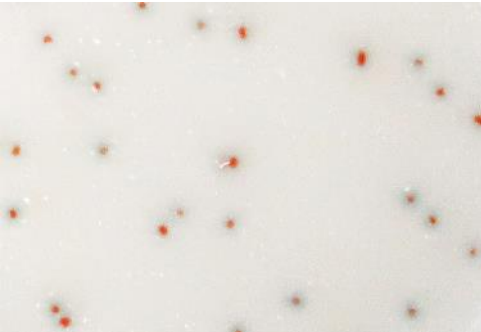
3.

enumeration

detection

Confirmation (continued)

(*only if red colonies are observed)



Red colony surrounded by blue color

Red colony

→ *L. monocytogenes*
(*L. monocytogenes* +)

→ *L. ivanovii*
(*L. monocytogenes* -)

Procedure of CompactDry LM method for **detection** of *Listeria monocytogenes*

1. Preparation of sample

Dilute X g or X mL of sample in 9 x X ml Half Fraser broth.



2. Enrichment

Incubate at 30°C for 24 h.



3. Isolation

page 8



4. Reading

page 4

↓ (only if red colonies are observed or single colony is not observed)

5. Confirmation

page 5-6

Isolation

detection

HyServe

1. Drop 0.7mL of sterilized water (or saline, buffer) at the edge of CompactDry LM plate.



2. Drop 0.1 mL of enrichment culture at the opposite point where sterilized water dropped.



3. Streak the inoculum over the whole plate by a loop gently (about 10 lines).



4. Incubate at 37°C for 24h and 48h.

