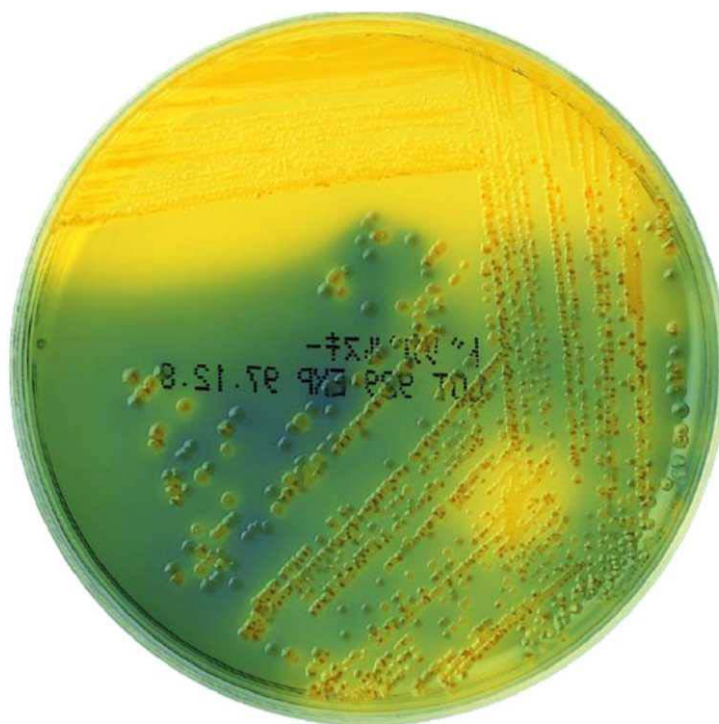


BTB Lactose Agar



Code	Form	Package	Storage	Shelf Life
05042	Powder	300 g	Dry, RT	3 years

Directions

Suspend 40.0 g of the dehydrated medium in 1,000 mL of distilled water, mix well and heat to dissolve the medium. Distribute about 20 mL amounts into the Petri Dish after being sterilized by autoclaving at 121 °C for 15 minutes. Incubate at 37 °C for about 18 - 24 hours. Since the medium has a very weak selectivity, small colonies of Staphylococcus and/or gram positive Cocci may grow.

Remarks

Organisms non-fermenting lactose such as *Salmonella* and *Shigella* form colorless semitransparent colonies, while organisms fermenting lactose such as coliform form yellow colonies.

Formula

Components	In 40.0 g/L
Meat Extract	5.0 g
Peptone	10.0 g
Lactose	10.0 g
Brom Thymol Blue	0.08 g
Agar	15.0 g

pH 7.2 ±