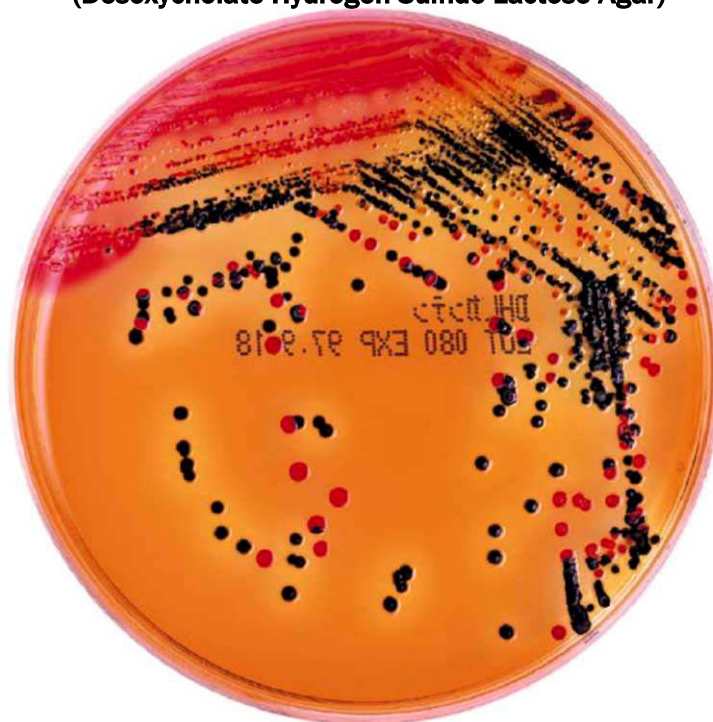


DHL Agar

(Desoxycholate Hydrogen Sulfide Lactose Agar)



Code	Form	Package	Storage	Shelf Life
05040	Granule	300 g	Dry, RT	3 years

Directions

Suspend 63.3 g of the dehydrated medium in 1,000 mL of distilled water, mix well and heat to dissolve the medium. Distribute about 20 mL amounts to the Petri dishes and dry the surface of the medium before use.

Determinations

Incubate at 37 °C for about 20 hours. Avoid heavy inoculation of the specimen as on SS Agar. The amount of specimen applied to in case of MacConkey Agar is desirable. Lactose, saccharose non-fermenting organisms form colorless and transparent colonies relatively larger than those on SS Agar. On the other hand, lactose, saccharose fermenting organisms form red and opaque colonies. Thus differentiation between the two organisms is easy. Organisms producing hydrogen sulfide are liable to form black colonies.

Remarks

Though this medium has little selectivity, it supports excellent growth of *Shigella* and *Salmonella* that do not grow well on SS Agar, and is used for the isolation of pathogenic coli.

Formula

Components	In 63.3 g/L
Meat Extract	3.0 g
Peptone	20.0 g
Lactose	10.0 g
Sucrose	10.0 g
Sodium Desoxycholate	1.0 g
Sodium Thiosulfate	2.3 g
Sodium Citrate	1.0 g
Ferric Ammonium Citrate	1.0 g
Neutral Red	0.03 g
Agar	15.0 g

pH 7.4 ±